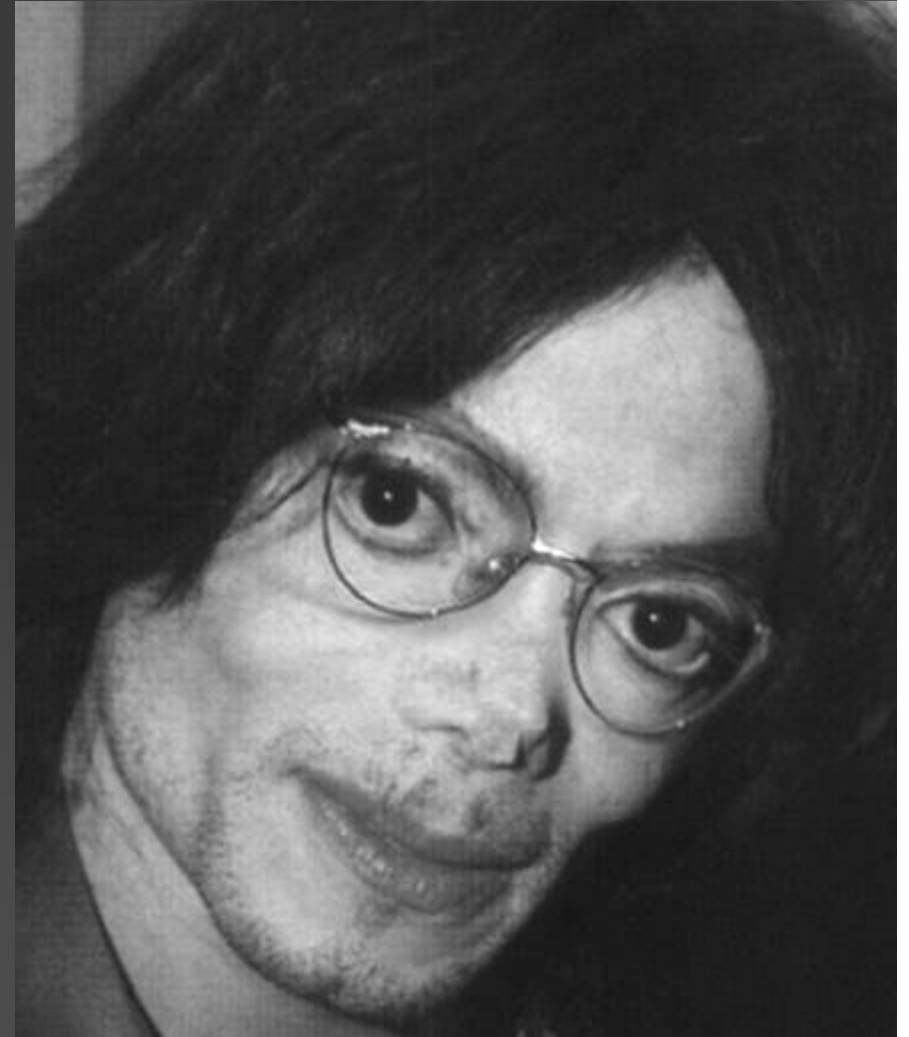


Emmetropia after cataract surgery

1. Astigmatism control
 2. ACCOMMODATION or pseudoaccommodation options:
 - Bi - multifocal IOLs
 - Accommodative IOLs
 - Monovision
 3. Less ABERRATIONS
-

After *everything* has been reshaped,
why these spectacles ?



Images courtesy of Luke Lesoil Azimut Company